

THE APOLLO UNIVERSITY

Saketa, Chittoor, AP

AHS- IV Semester End Examination, June, 2024

PAPER -III – EMTT 2506- CRITICAL CARE MANAGEMENT

Time: 3 hours

Max. Marks: 60

Section –A (10x2=20 marks)

Answer all Questions with Short Answers

1. Name the components in trauma score? Mention the normal value of each?
2. What is Bio availability?
3. Define ventilation, oxygenation and respiration.
4. What is Waveform capnography?
5. Names some Nephrotoxic drugs.
6. Define RRT
7. What is the early Sign of Appendicitis?
8. Define MRSA and its antibiotic therapy
9. Define GERD.
10. Mention some causes of lower GI Bleeding

Section –B (5X8=40 marks)

Answer all Questions either A or B in 400 words each

11. A) Discuss the medication errors in ICU? Write the classification? List down the risk factors?

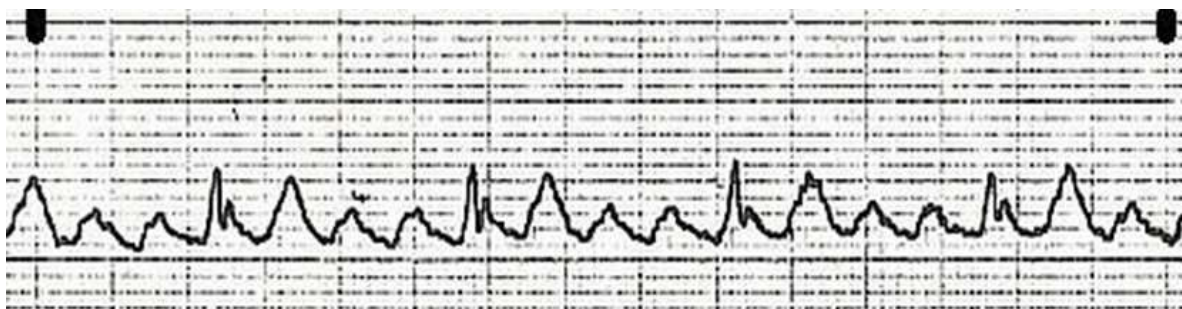
OR

B) Explain about the metabolic acid-base and alkalosis acid-base imbalances?

12. A) Discuss about the Factors Affecting Ventilation and Factors Affecting Oxygenation and Respiration?

OR

B) Identify the rhythm and explain in details-



Cont....

13. A) Describe in detail about Indications of Renal Replacement Therapy in a detailed manner.

OR

B) Discuss in Detail about Physiological Principles of Dialysis.

14. A) Discuss in Detail about CAP, Causes, Clinical Features, Diagnosis and its management.

OR

B) Explain in Detail about Intra-abdominal Infections, Causative Organism, Clinical Features and its management.

15. A) Explain in Detail about Chronic Liver failure, Causes, Clinical features, Management and its complications.

OR

B) Explain about Anti-Platelet agents, Classification, Mechanism of Action and its Importance in ICU management
